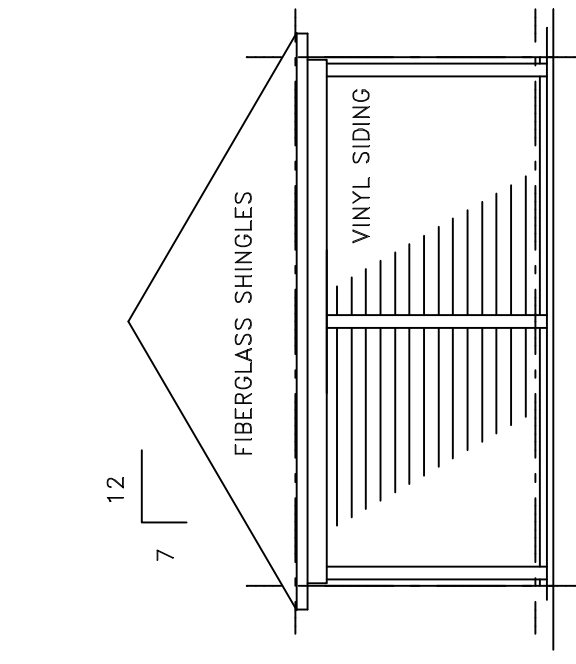


JOB NO.	
DRAWN BY	CMH
CHECKED BY	CMH
DATE	4-22-2010
REVISIONS	
6-30-2010	
R-2-10	

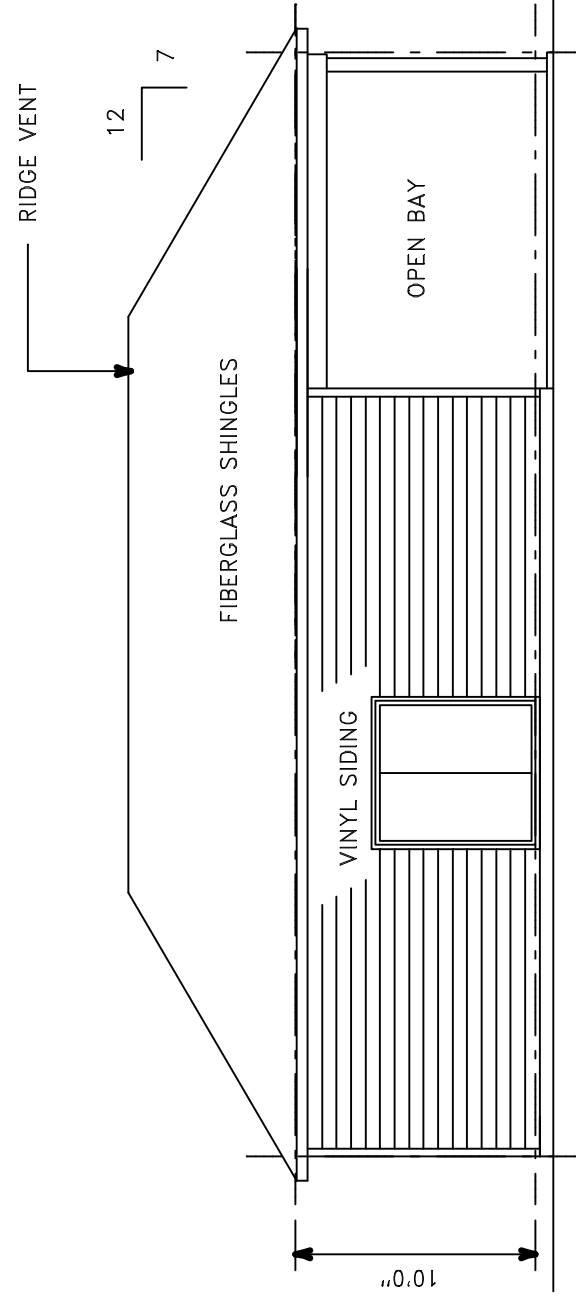
SHEET NO.

MS-2



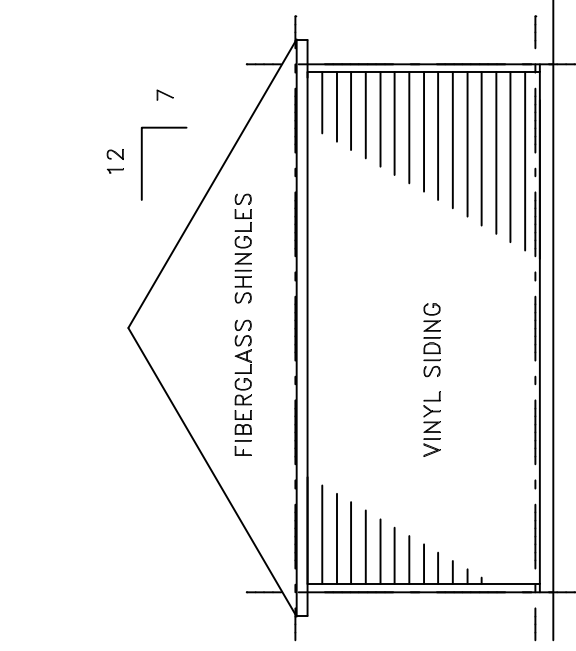
RIGHT SIDE ELEVATION

SCALE: 1/8" = 1'-0"



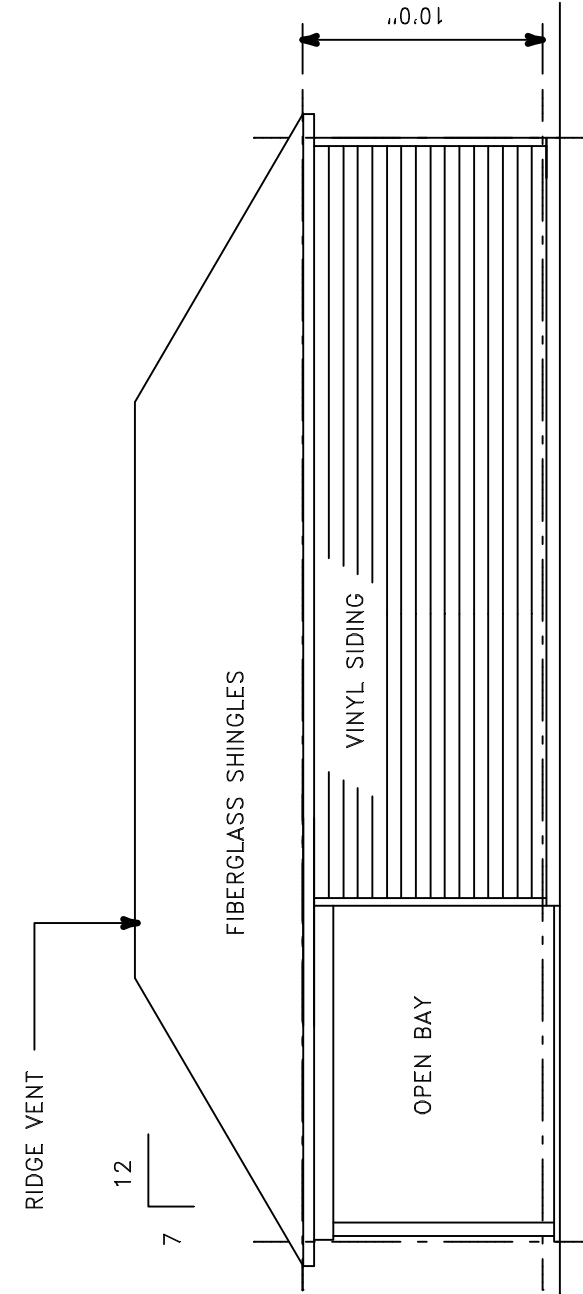
FRONT ELEVATION

SCALE: 1/8" = 1'-0"



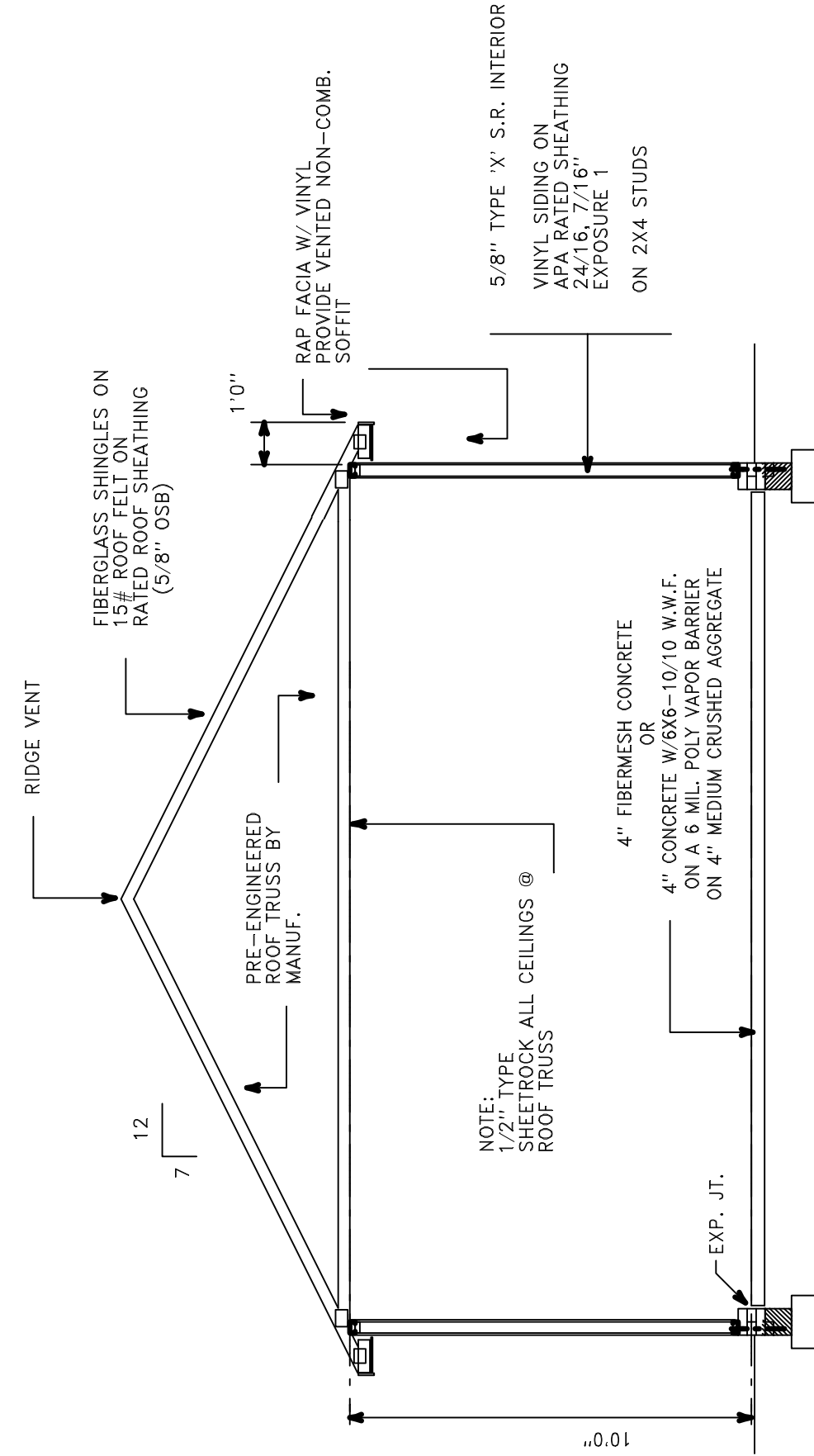
LEFT SIDE ELEVATION

SCALE: 1/8" = 1'-0"



REAR ELEVATION

SCALE: 1/8" = 1'-0"



CROSS SECTION

Scale: 1/4" = 1'-0"

PRE-ENGINEERED TRUSSES (GENERAL). Shall be shop fabricated by a manufacturer licensed by connector components manufacturer such as "Gang-Naji", "Sanford" or "Grip-Plate". All lumber shall be stress rated and grade marked in accordance with engineered design data. Connector plates shall be galvanized sheet steel, 20 ga. minimum, 30,000 psi minimum yield strength. Oversize plates 20% to allow for fabrication variances. (Erection): Trusses shall be handled to prevent stresses that would affect strength of truss. Provide continuous TX4 bracing for bottom chord and anchor bearing ends securely to walls. Furnish Architect with shop drawings for approval.