

JOB NO.	CMH
DATE	4-22-2010
CHECKED BY	CMH
REVISIONS	
6-30-2010	
8-2-10	

2 AND 3 BEDROOM UNIT BLDG. PLAN / 24 UNIT BLDG. TYPE 'C'

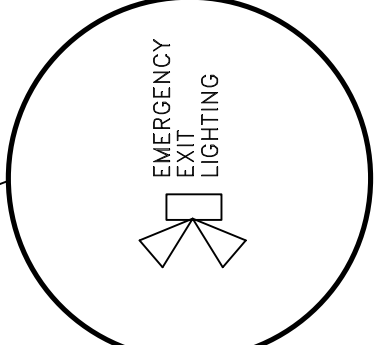
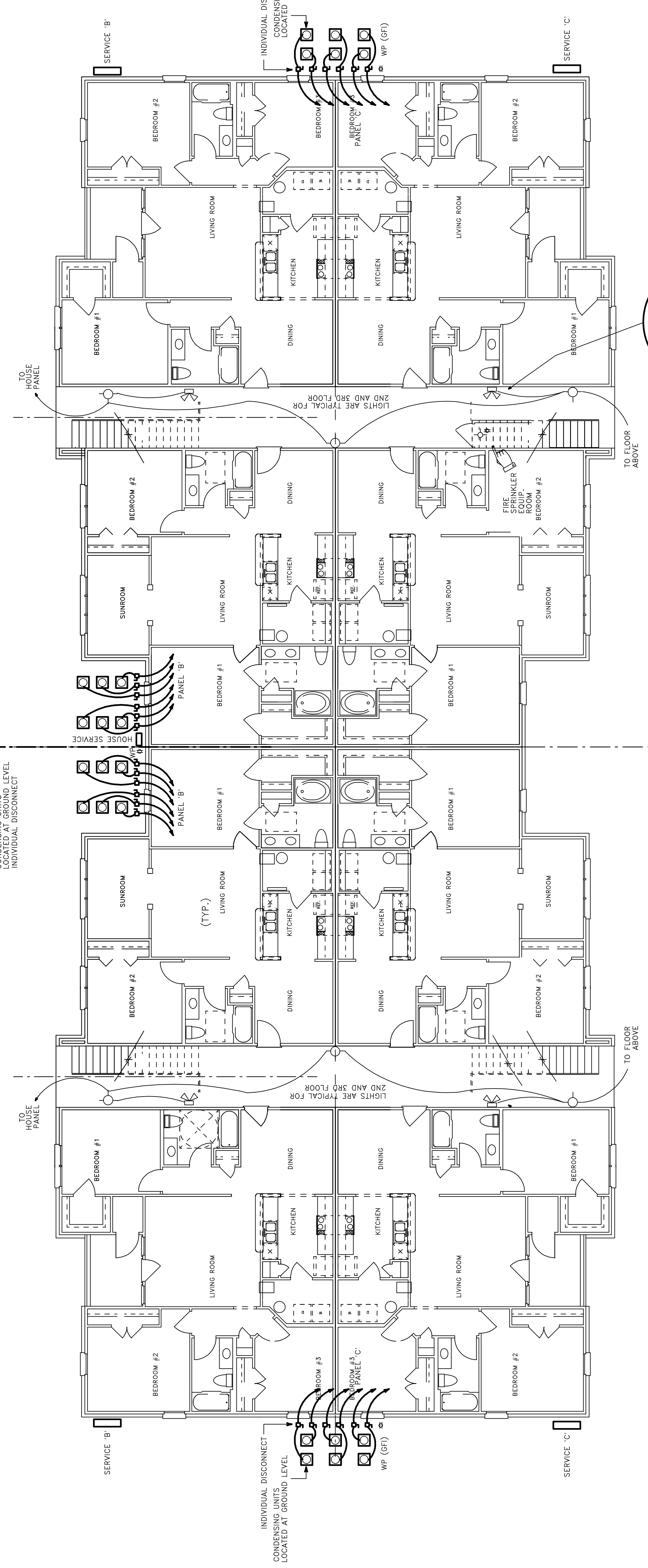
NOTE:
METER PACKS TO HAVE MAIN DISCONNECT
(TYPICAL)

NOTE:
ALL FLOOR PENETRATIONS (P&E TRADES)
SHALL BE PROTECTED WITH 1/2" MIN. THICK
3M FIRE DAM, 150 CAL/LF OR
EQUAL TOP & BOT. PLATE
(UL DESIGN) FC2007
SYSTEM NO. FC2013
SYSTEM NO. WL2052

NOTE:

SCHEMATIC INTENT SUBJECT TO
APPROVAL AND / OR MODIFICATION
PER LOCAL POWER CO.
ARCHITECT AND CONTRACTOR SHALL
BE ADVISED OF ANY MODIFICATION
THE CONTRACTOR SHALL REQUEST LOCAL
POWER CO. TO APPROVE AND / OR
POWER METER BOX EQUIPMENT AND
LOCATION
CONTRACTOR SHALL NOTIFY ARCHITECT
OF APPROVED PANEL / EQUIPMENT
LOCATIONS

NOTE:
EXTERIOR BREEZEWAY
LIGHTING TO HOUSE
ON TIMER -OR-
PHOTO-CELL DEVICE



REFERENCE: 1003.2.11
MEANS OF EGRESS ILLUMINATION

2 AND 3 BEDROOM UNIT BLDG. / PERIMETER ELEC. / MECHANICAL

SCALE: 1/8" = 1'0"