

JOB NO.	CMH
CHECKED BY	CMH
DATE	4-22-2010
REVISIONS	
6-30-2010	
8-2-10	

NOTE: PROVIDE 3/4" COPPER OR CPVC
DRAIN FOR W.H. (TYP. ALL UNITS)
PROVIDE 3/4" PVC CONDENSATION
DRAIN ALL AHU (TYP ALL UNITS)

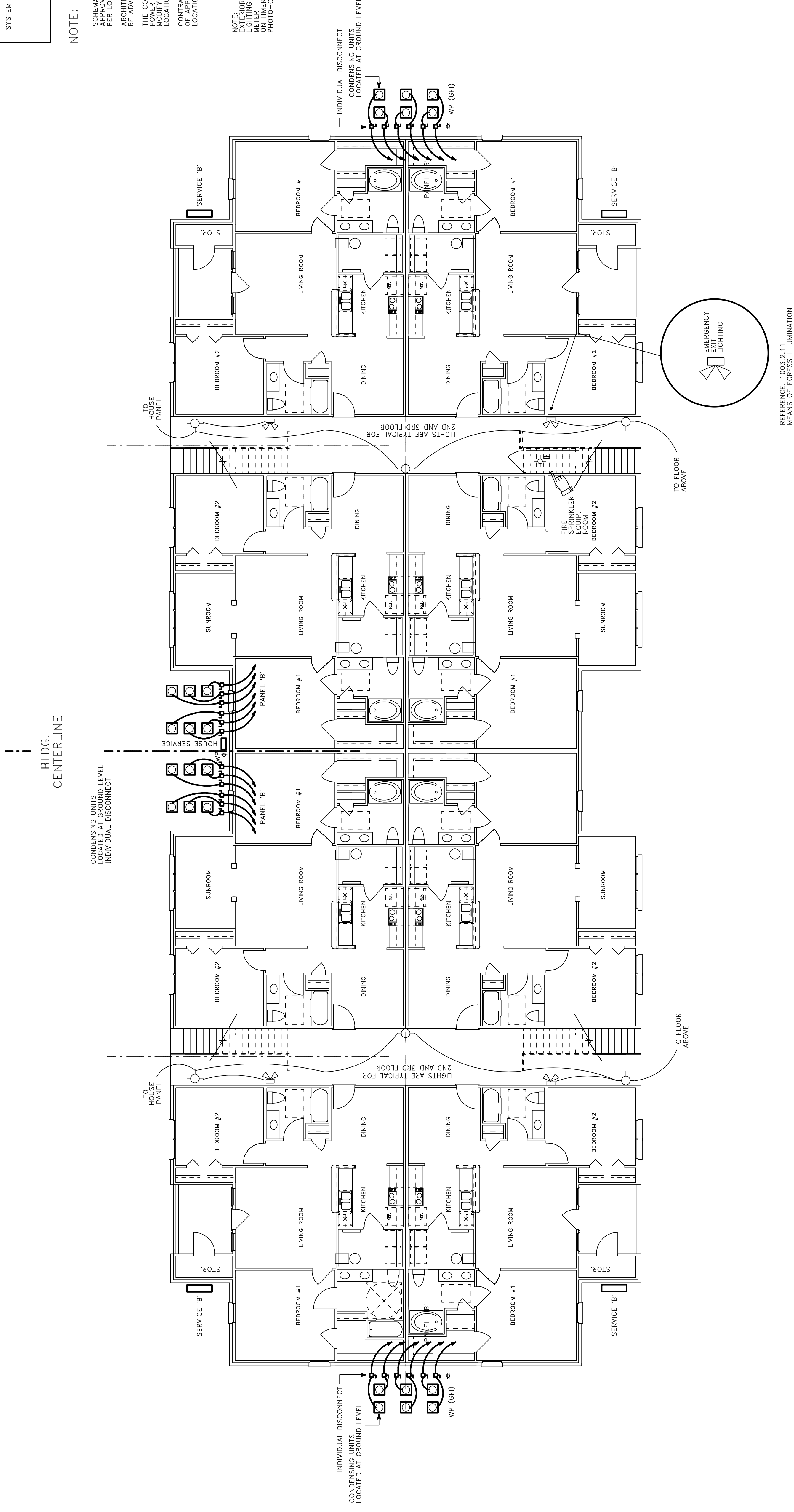
NOTE:
ALL FLOOR PENETRATIONS (P&E TRADES)
SHALL COMPLY W/ UL DESIGN UL446
BY THE MANUFACTURER OF THE
EQUIPMENT TO BE INSTALLED OR
EQUIVALENT (UL DESIGN) FC2007
SYSTEM NO. FC2013
SYSTEM NO. WL2052

NOTE:

SCHEMATIC INTENT SUBJECT TO
REVISIONS AND MODIFICATION
PER LOCAL POWER CO.
CONSULTANT AND CONTRACTOR SHALL
BE ADVISED OF ANY MODIFICATION
THE CONTRACTOR SHALL REQUEST LOCAL
POWER CO. TO APPROVE AND / OR
MODIFY METER BOX EQUIPMENT AND
LOCATION
CONTRACTOR SHALL NOTIFY ARCHITECT
OF ANY MODIFICATION / EQUIPMENT
LOCATIONS

NOTE:
LIGHTING BRACKETWAY
LOCATED TO HOUSE
METER BOX - OR
CONTRACTOR - OR
PHOTO-CELL DEVICE

NOTE: METER PACKS TO HAVE MAIN DISCONNECT
(TYPICAL)



2 BEDROOM UNIT BLDG. / PERIMETER ELEC. / MECHANICAL

SCALE: 1/8" = 1'0"

2 BEDROOM UNIT PLAN / 24 UNIT BLDG. TYPE 'B'