

JOB NO.	CMH
DATE	4-22-2010
CHECKED BY	CMH
REVISIONS	
6-30-2010	
8-2-10	

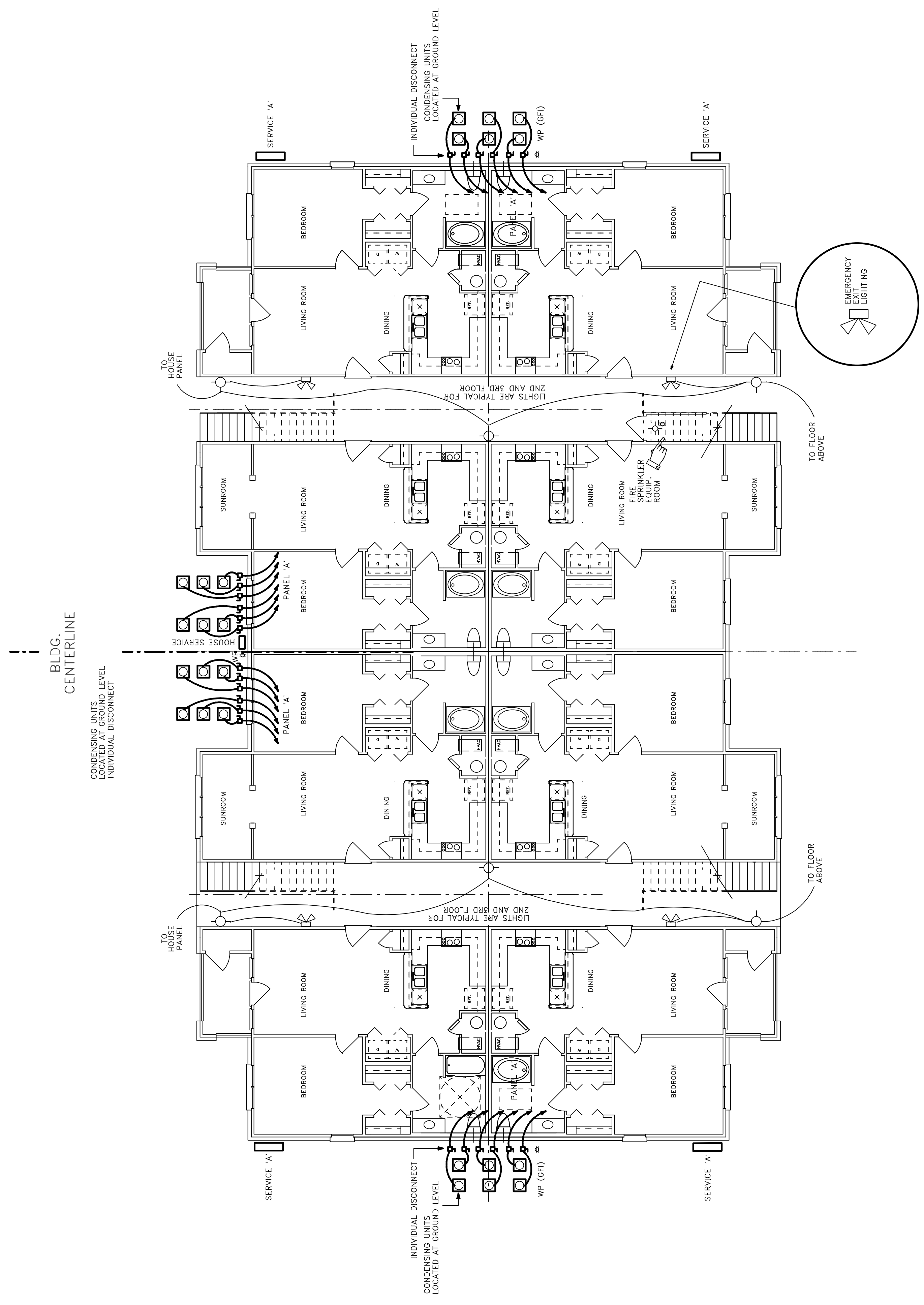
NOTE: PROVIDE 3/4" COPPER OR CPVC DRAIN FOR W.H. (TYP. ALL UNITS) PROVIDE 3/4" PVC CONDENSATION DRAIN ALL AHU (TYP. ALL UNITS)

NOTE:  
ALL FLOOR PENETRATIONS (P&M&E TRADES) SHALL BE MADE IN ACCORDANCE WITH 3M FIRE DAM, 150 CAL/INCH OR EQUAL, TOP & BOTT. PLATE (UL DESIGN) FC2007 SYSTEM NO. FC2013 SYSTEM NO. WL2052

NOTE:  
SCHEMATIC INTENT SUBJECT TO APPROVAL AND / OR MODIFICATION PER LOCAL POWER CO.  
ARCHITECT AND CONTRACTOR SHALL BE ADVISED OF ANY MODIFICATION  
THE CONTRACTOR SHALL REQUEST LOCAL POWER CO. TO APPROVE AND / OR LOCATE METER BOX EQUIPMENT AND  
CONTRACTOR SHALL NOTIFY ARCHITECT OF APPROVED PANEL / EQUIPMENT LOCATIONS

NOTE:  
EXTERIOR BREEZEWAY LIGHTING TO HOUSE ON TIMER -OR- PHOTO-CELL DEVICE

NOTE: METER PACKS TO HAVE MAIN DISCONNECT (TYPICAL)



REFERENCE: 1005.2.1.1  
MEANS OF EGRESS ILLUMINATION

BLDG. PERIMETER  
ELEC. AND MECH.  
SCHEMATIC

1 BEDROOM UNIT BLDG. / PERIMETER ELEC. / MECHANICAL

SCALE: 1/8" = 1'0"

1 BEDROOM UNIT PLAN / 24 UNIT BLDG. TYPE 'A'