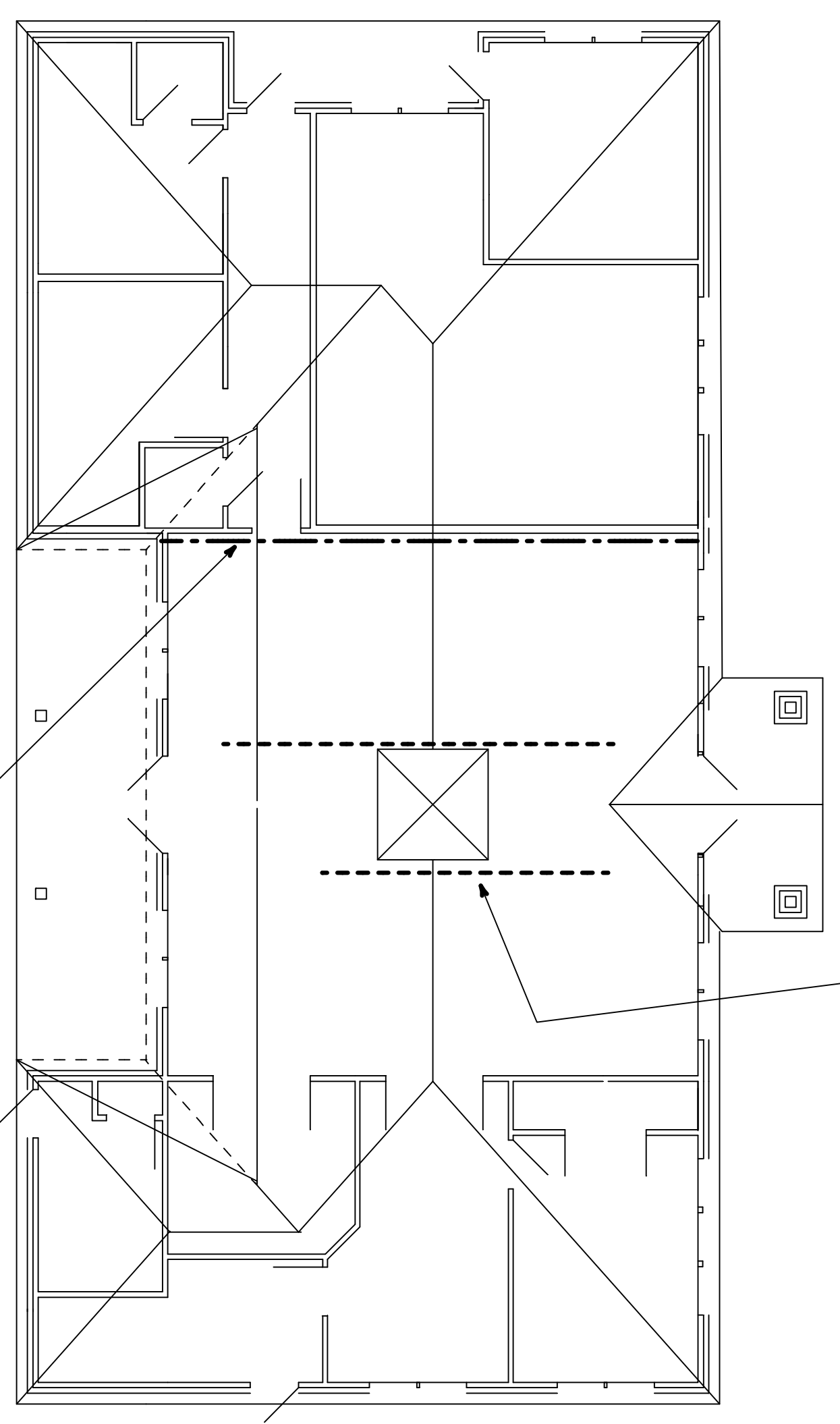


JOB NO.	
DRAWN BY	CMH
CHECKED BY	CMH
DATE	4-22-2010
REVISIONS	
6-30-2010	
8-2-10	

SHEET NO.

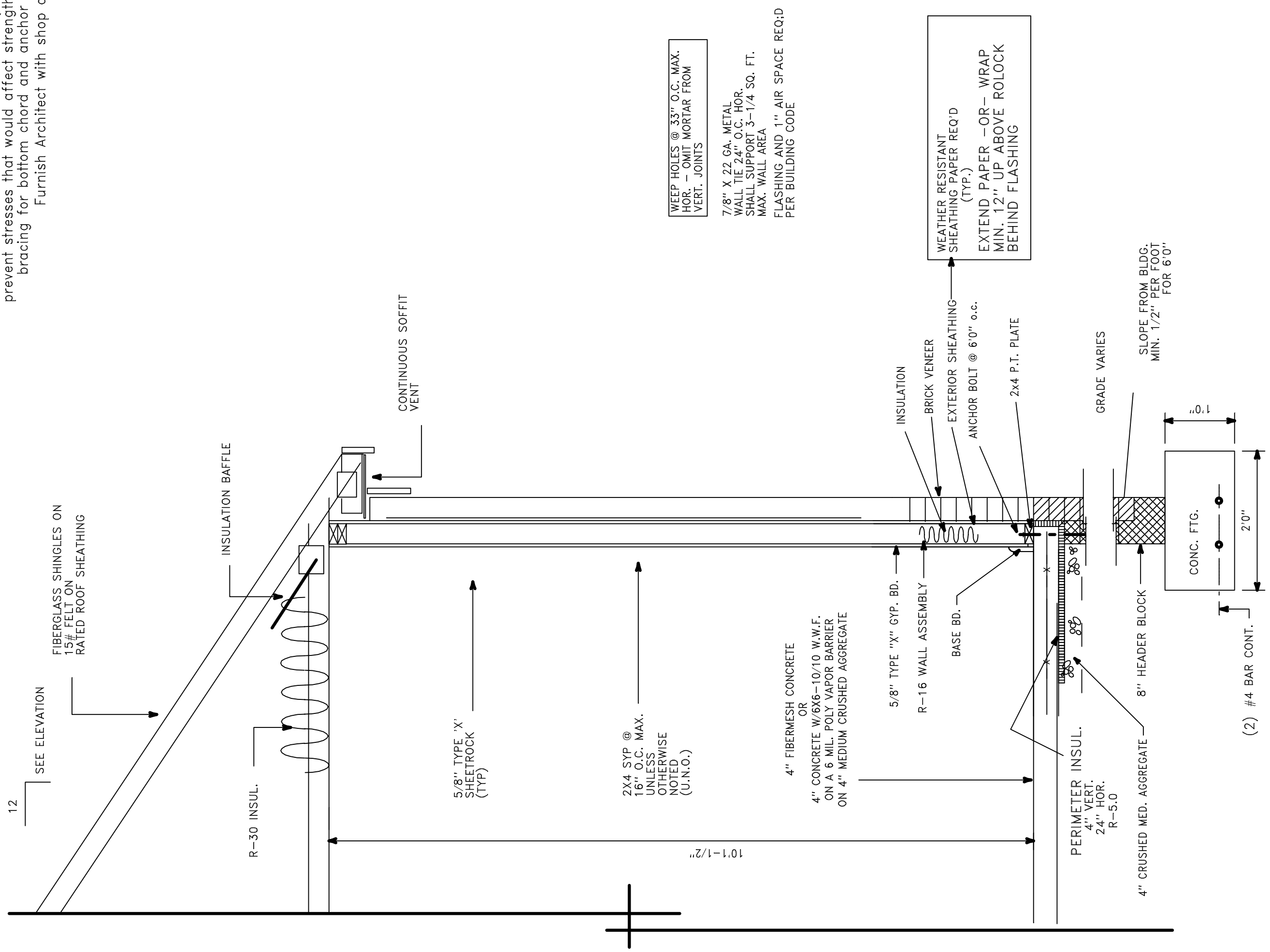
ACT-5

PRE-ENGINEERED TRUSSES (GENERAL): Shall be shop fabricated by a manufacturer in accordance with the manufacturer's design data. All lumber shall be stress rated and grade marked "Santford" or "Grip-Plate". All lumber shall be stress rated and grade marked in accordance with engineered design data. Connector plates shall be galvanized sheet steel, 20 ga. minimum, 30,000 psi minimum yield strength. Oversize plates 20% to allow for fabrication variances. (Erection): Trusses shall be handled to prevent stresses that would affect strength of truss. Provide continuous 1X4 bracing for bottom chord and anchor bearing ends securely to walls. Furnish Architect with shop drawings for approval



ROOF PLAN SCHEMATICS

Scale: 1/8" = 1'-0"



TYPICAL EXT. WALL SECTION @ BRICK VENEER

SCALE: 3/4" = 1'-0"

NOTE: ANCHOR BOLTS 2308.6
1/2" BOLTS @ 6' MAX. AND 1/0" MAX. OFF CORNERS
7" EMBEDMENT IN CONCRETE
15" EMBEDMENT IN GONRY
STANDARD HOOK ENDS ONLY
APPROVED FOUNDATION STRAPS
MAY BE USED WHERE APPROVED
BY LOCAL BLDG. CODE OFFICIALS

WEEP HOLES @ 33" O.C. MAX.
HOR. - OMIT MORTAR FROM
VERT. JOINTS
7/8" X 22 GA. METAL
WALL TIE 24" O.C. HOR.
MAX. WALL AREA
FLASHING AND 1" AIR SPACE REQ.
PER BUILDING CODE

WEATHER RESISTANT
SHEATHING PAPER R-EO D
(TYP.)
EXTEND PAPER -OR- WRAP
MIN. 12" UP ABOVE ROLOCK
BEHIND FLASHING