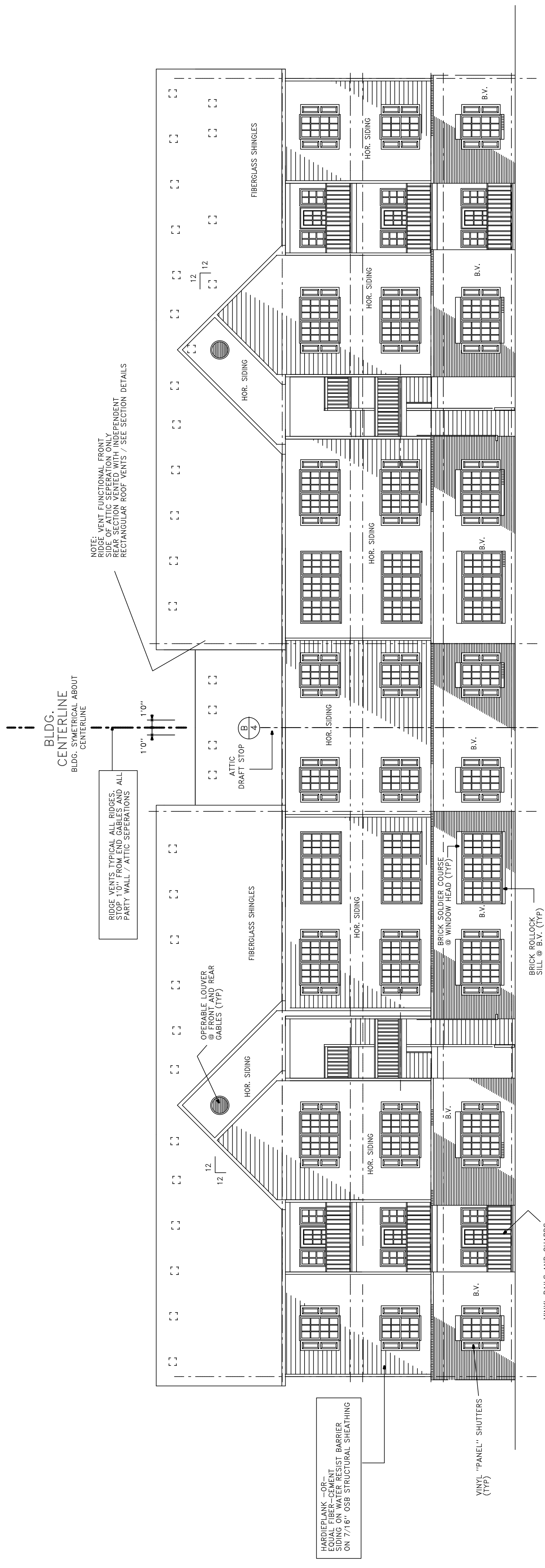


JOB NO.	CMH
DRAWN BY	CMH
CHECKED BY	CMH
DATE	4-22-2010
REVISIONS	
8-2-2010	

SHEET NO.

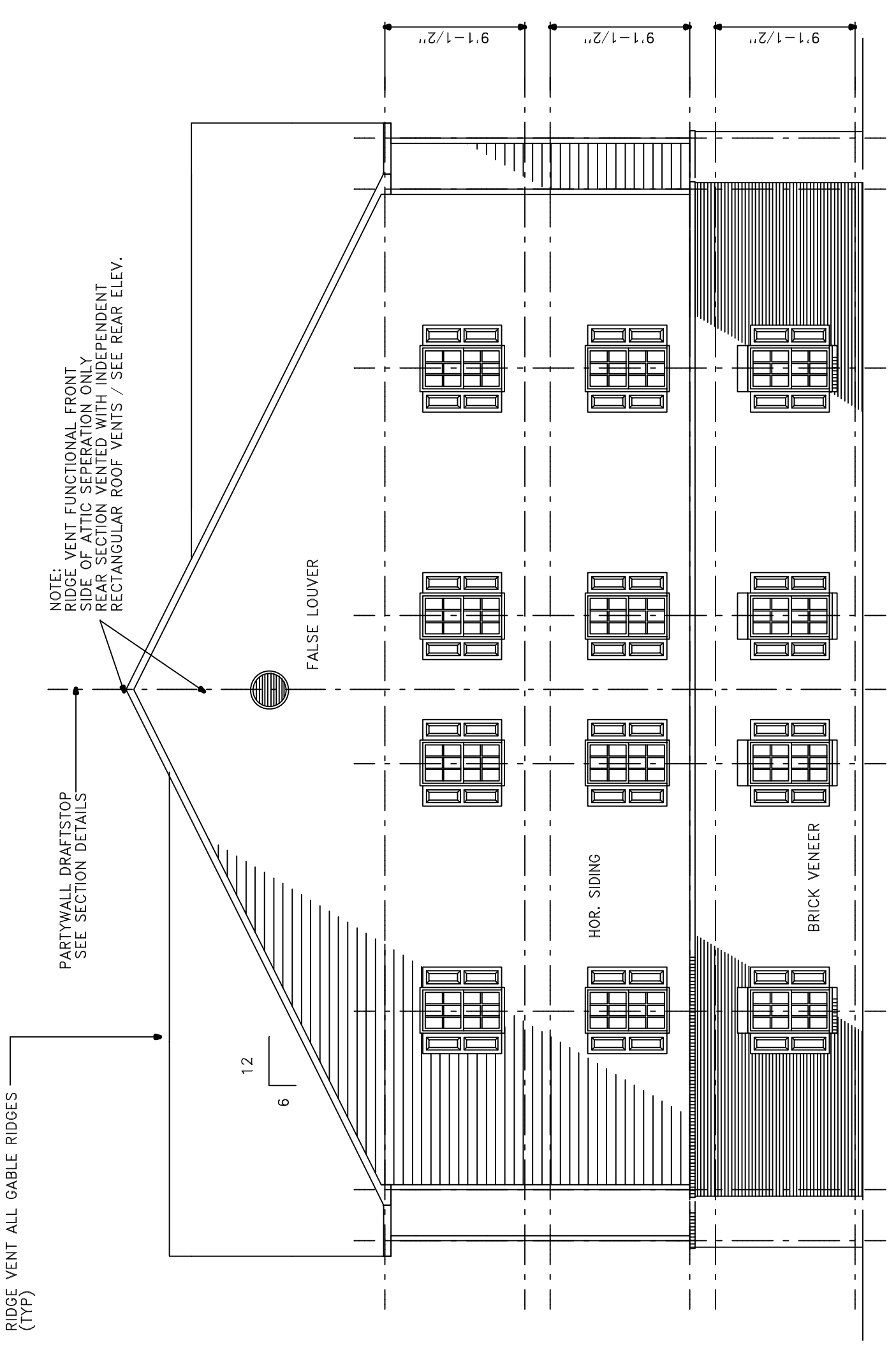
3C

2 AND 3 BEDROOM UNIT PLAN / 24 UNIT BLDG. TYPE 'C'



FRONT AND REAR ELEVATION / 2 AND 3 BED UNIT BLDG. TYPE 'C'

SCALE: 1/8" = 1/8"

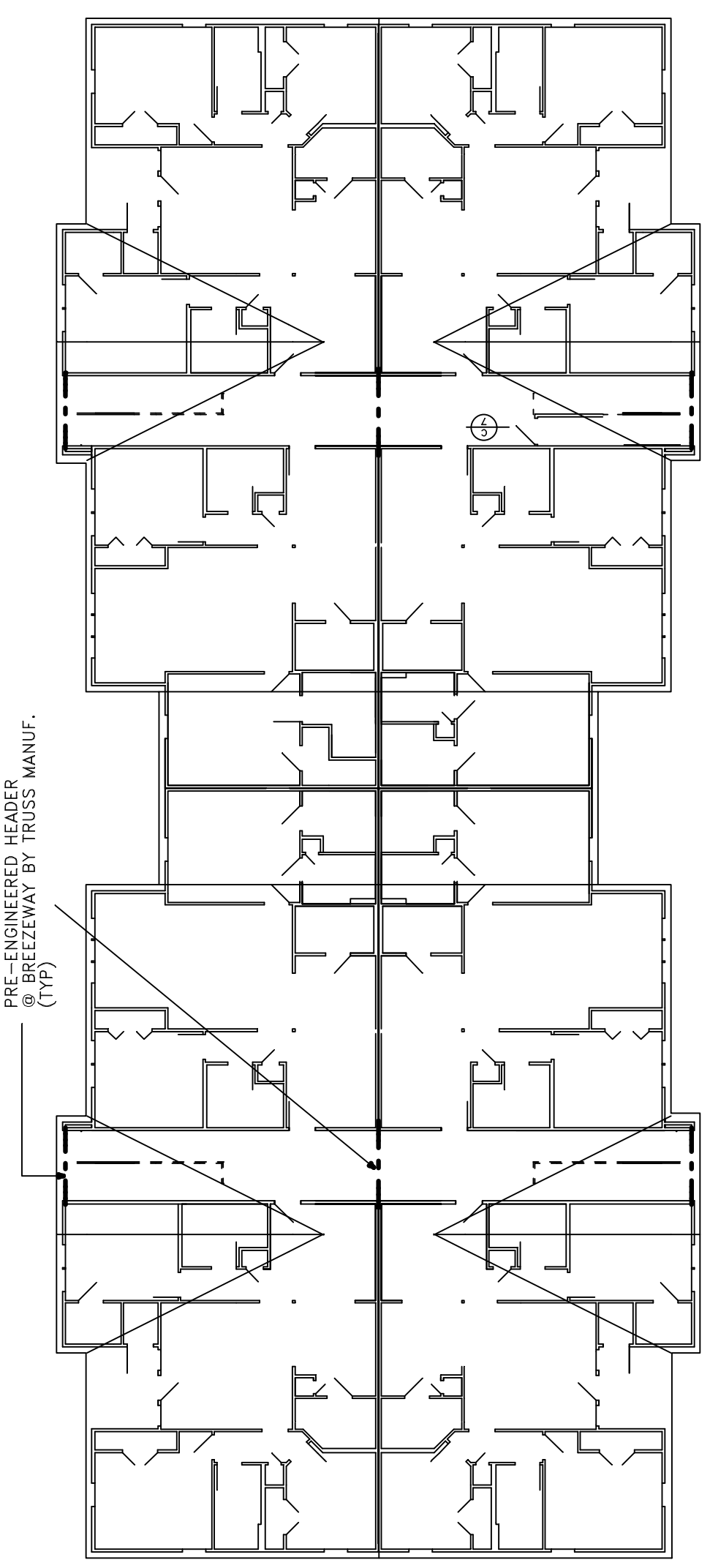


LEFT SIDE ELEVATION / RIGHT SIDE SIMILAR

SCALE: 1/8" = 1/8"

4\"/>

PRE-ENGINEERED TRUSSES (GENERAL): Shall be shop fabricated by a manufacturer licensed by connector components manufacturer such as "Gang-Nail", "Sanford", or "Grip-Plate". All lumber shall be stress rated and grade marked in accordance with engineered design data. Connector plates shall be galvanized sheet steel, 20 ga. minimum, 30,000 psi minimum yield strength. Oversize plates 20% to allow for fabrication variances. (Erection): Trusses shall be handled to prevent stresses that would affect strength of trusses. Provide continuous 1x4 bracing for trusses and blocking for trusses and secure to walls. Furnish Architect with shop drawings for approval.



SCHEMATIC ROOF PLAN