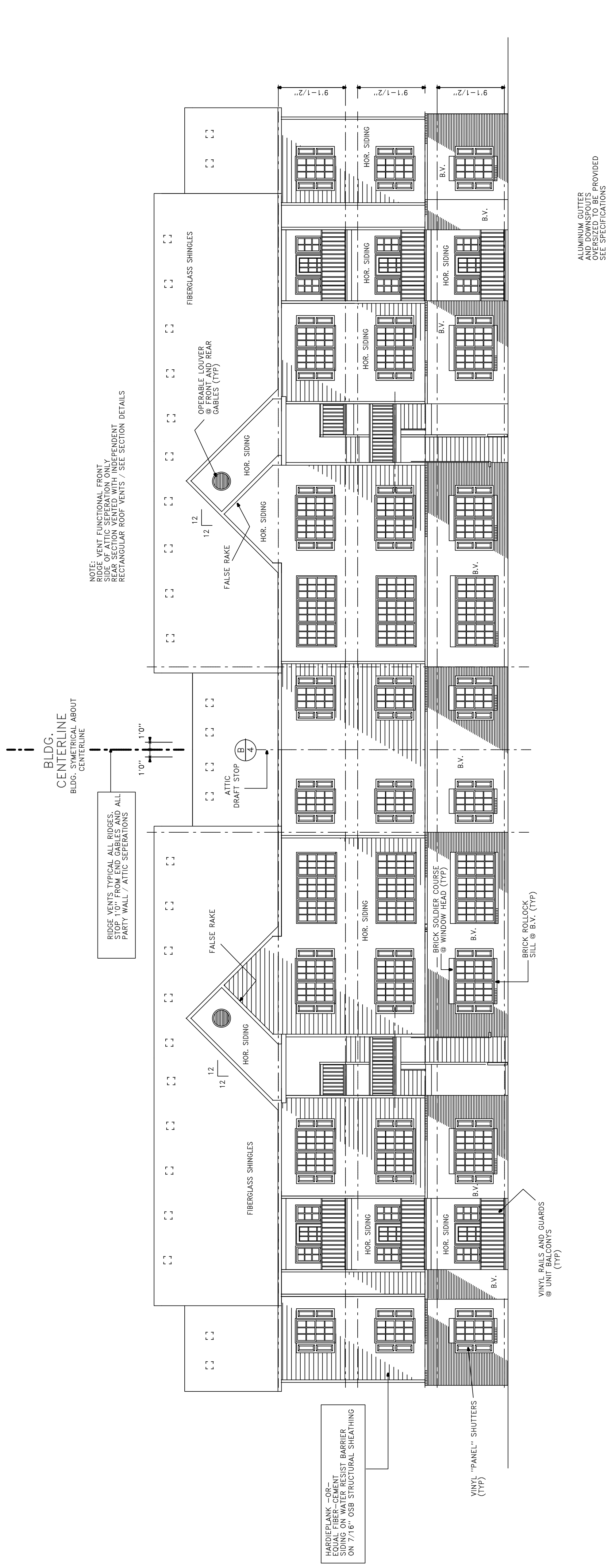


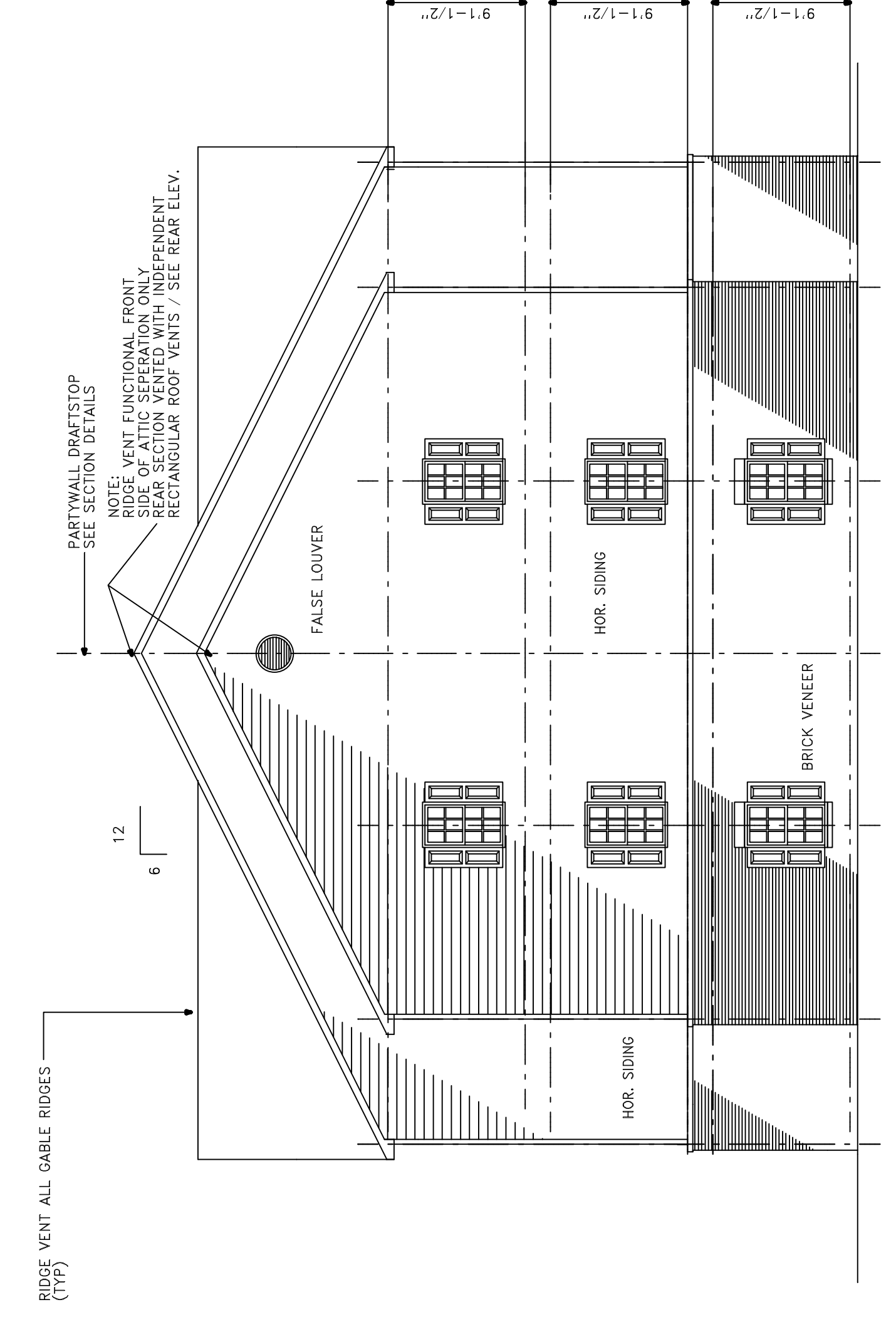
JOB NO.	CMH
DRAWN BY	CMH
CHECKED BY	CMH
DATE	4-22-2010
REVISIONS	
8-2-10	
6-30-2010	

2 BEDROOM UNIT PLAN / 24 UNIT BLDG. TYPE 'B'



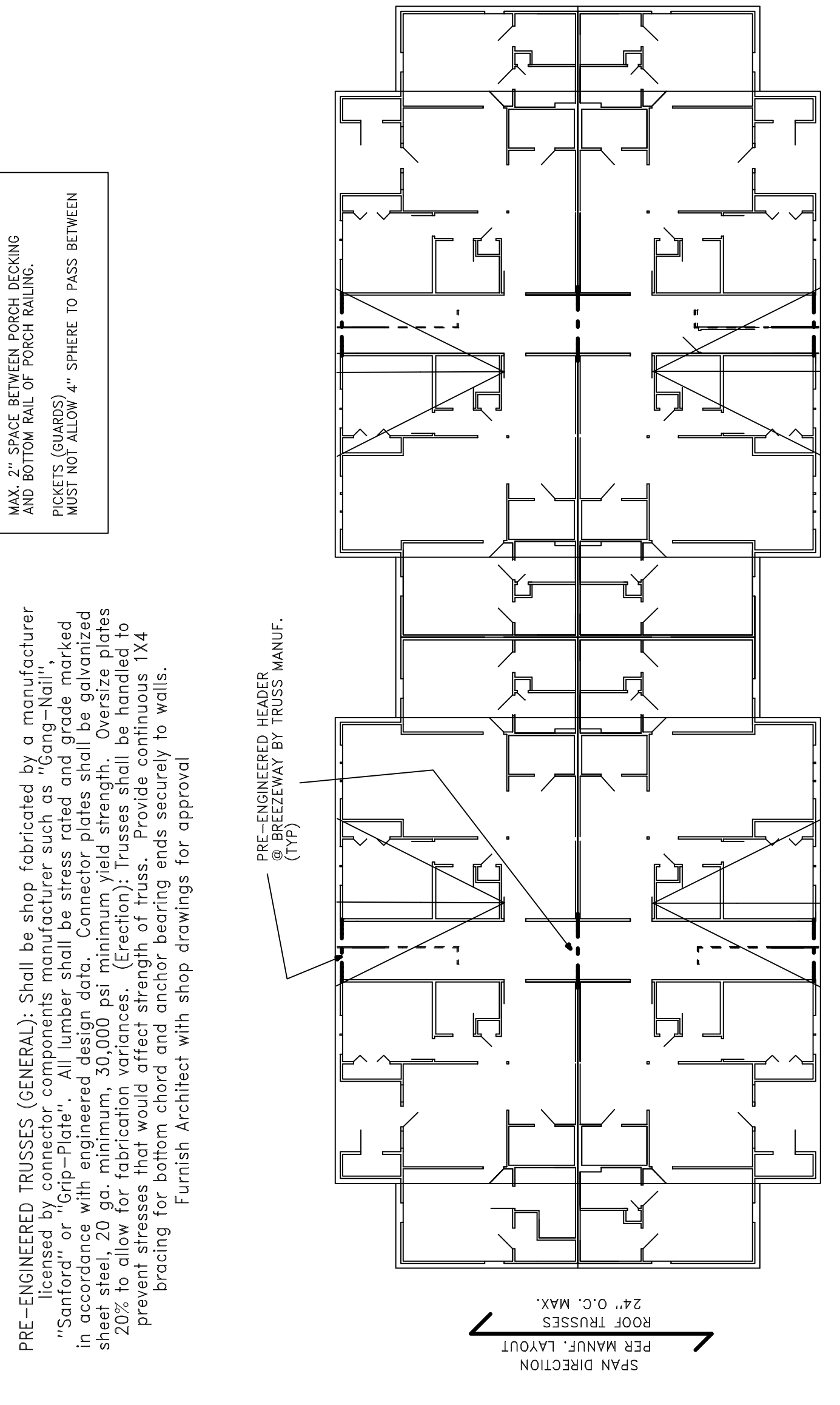
FRONT AND REAR ELEVATION / 2 BED UNIT BLDG. TYPE 'B'

SCALE: 1/8" = 1/8"



LEFT SIDE ELEVATION / RIGHT SIDE SIMILAR

SCALE: 1/8" = 1/8"



SCHEMATIC ROOF PLAN

42" HIGH RAILWAY 2ND & 3RD FLOOR LANINGS / BREEZEWAY (TYP)
MAX. 2" SPACE BETWEEN PORCH DECKING AND BOTTOM RAIL OF PORCH RAILING.
PICKETS (GUARDS) MUST NOT ALLOW 4" SPHERE TO PASS BETWEEN

PRE-ENGINEERED TRUSSES (GENERAL): Shall be shop fabricated by a manufacturer licensed by connector components manufacturer such as "Gang-Nail", "Sanford" or "Grip-Plate". All lumber shall be stress rated and grade marked in accordance with engineered design data. Connector plates shall be galvanized sheet steel, 20 ga. minimum, 30,000 psi minimum yield strength. Oversize plates 20% to allow for fabrication variances. (Erection): Trusses shall be handled to prevent stresses that would affect strength of truss. Provide continuous 1X4 bracing for bottom chord and anchor bearing ends securely to walls. Furnish Architect with shop drawings for approval

ALUMINUM GUTTER OVERSIZED TO BE PROVIDED SEE SPECIFICATIONS