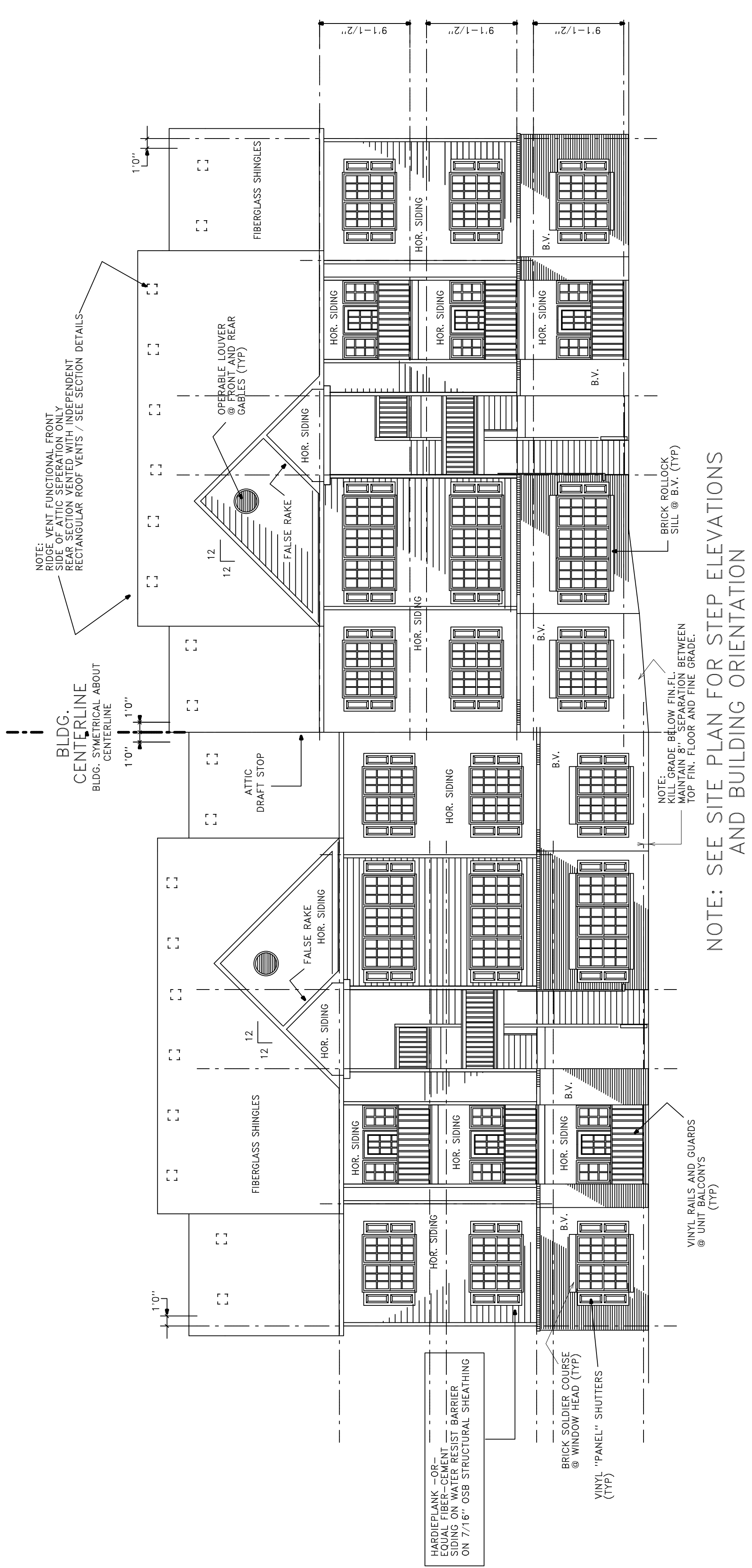


| | |
|------------|-----------|
| JOB NO. | |
| DRAWN BY | CMH |
| CHECKED BY | CMH |
| DATE | 9-11-2010 |
| REVISIONS | |
| 6-30-2010 | |
| 8-2-10 | |

1 BEDROOM UNIT PLAN / 24 UNIT BLDG. TYPE 'A'

STEPPED FOUNDATION
AT CENTER PARTY WALL



NOTE: SEE SITE PLAN FOR STEP ELEVATIONS AND BUILDING ORIENTATION

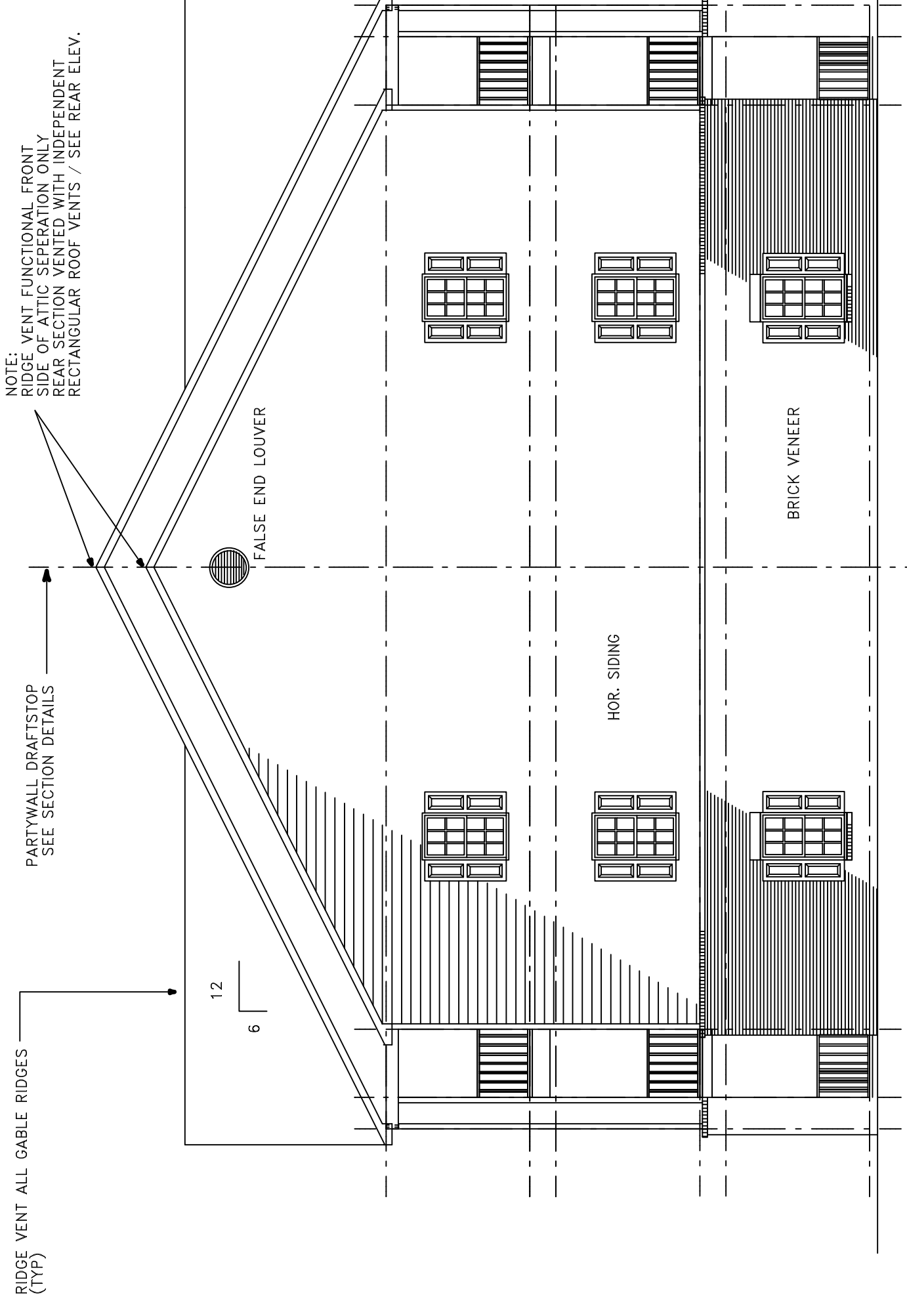
FRONT AND REAR ELEVATION / 24 UNIT BLDG. TYPE 'A'

SCALE: 1/8" = 1'0"

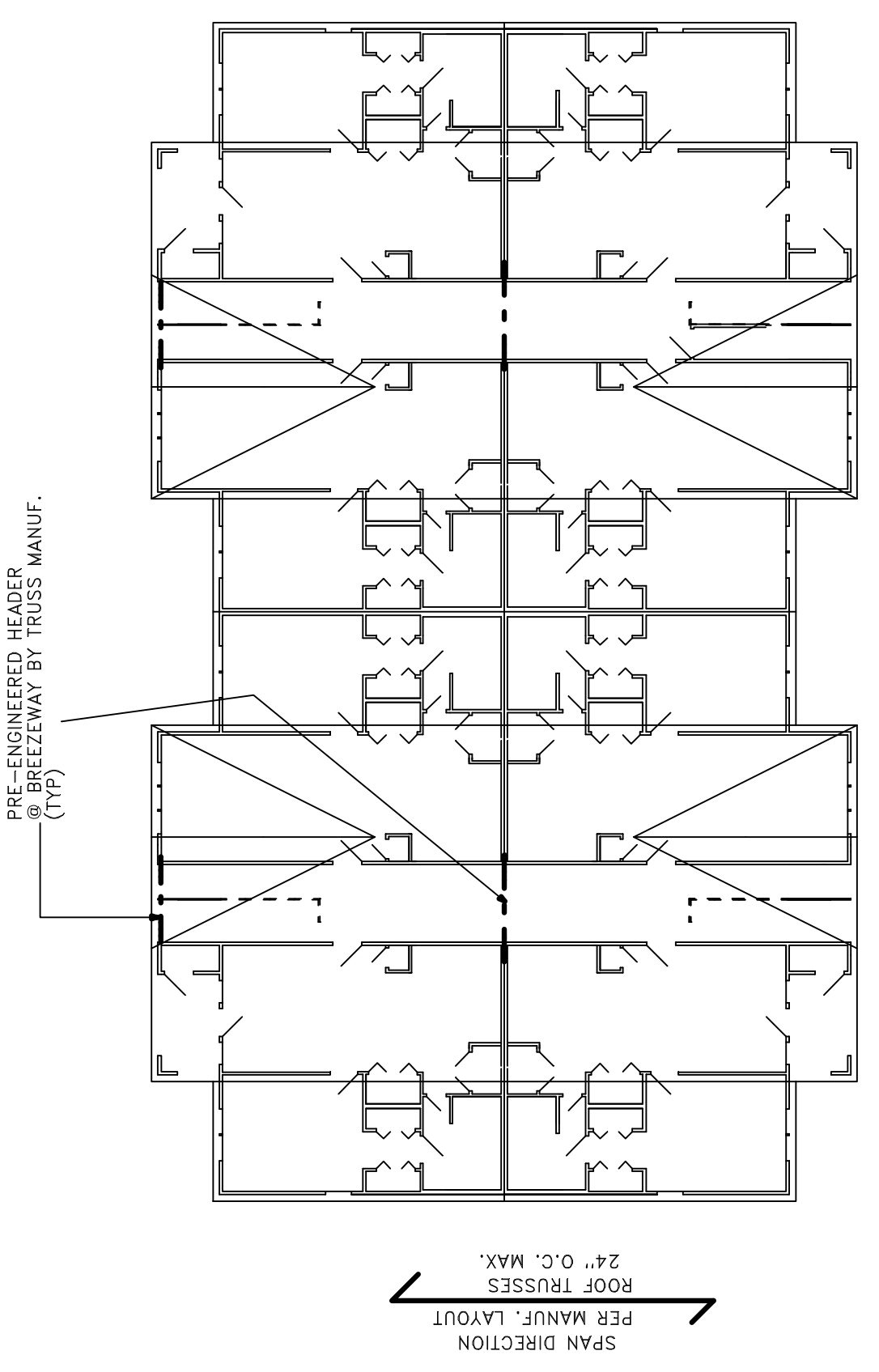
ALUMINUM GUTTER AND DOWNSPOUTS OVERSIZED TO BE PROVIDED SEE SPECIFICATIONS

PRE-ENGINEERED TRUSSES (GENERAL): Shall be shop fabricated by a manufacturer licensed by connector components manufacturer such as "Gang-Nail", "Sartford" or "Grip-Plate". All lumber shall be stress rated and grade marked in accordance with engineered design data. Connector plates shall be galvanized steel with a minimum 30,000 psi minimum yield strength. Oversize plates shall be used for all truss connections. Trusses shall be braced with 2x4 blocking for bottom chord and anchor bearing ends securely to walls. Furnish Architect with shop drawings for approval

42" HIGH RAIL AT 2ND & 3RD FLOOR LANDINGS / BREZEWAY (TYP) MAX. 2" SPACE BETWEEN PORCH DECKING AND BOTTOM RAIL OF PORCH RAILING. PICKETS (GUARDS) MUST NOT ALLOW 4" SPHERE TO PASS BETWEEN



LEFT SIDE ELEVATION / RIGHT SIDE SIMILAR



SCHEMATIC ROOF PLAN