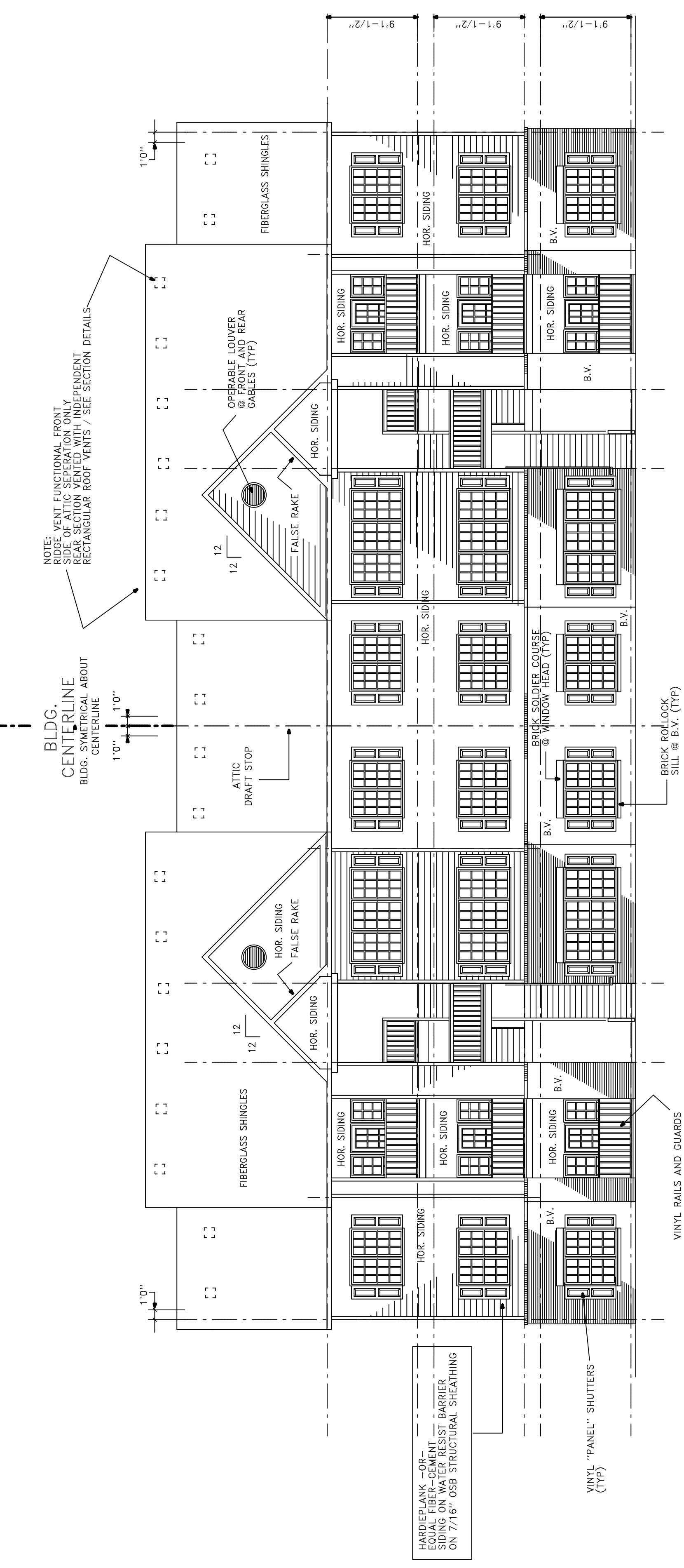


JOB NO.	
DRAWN BY	CMH
CHECKED BY	CMH
DATE	4-22-2010
REVISIONS	
8-2-2010	

1 BEDROOM UNIT PLAN / 24 UNIT BLDG. TYPE 'A'



FRONT AND REAR ELEVATION / 24 UNIT BLDG. TYPE 'A'

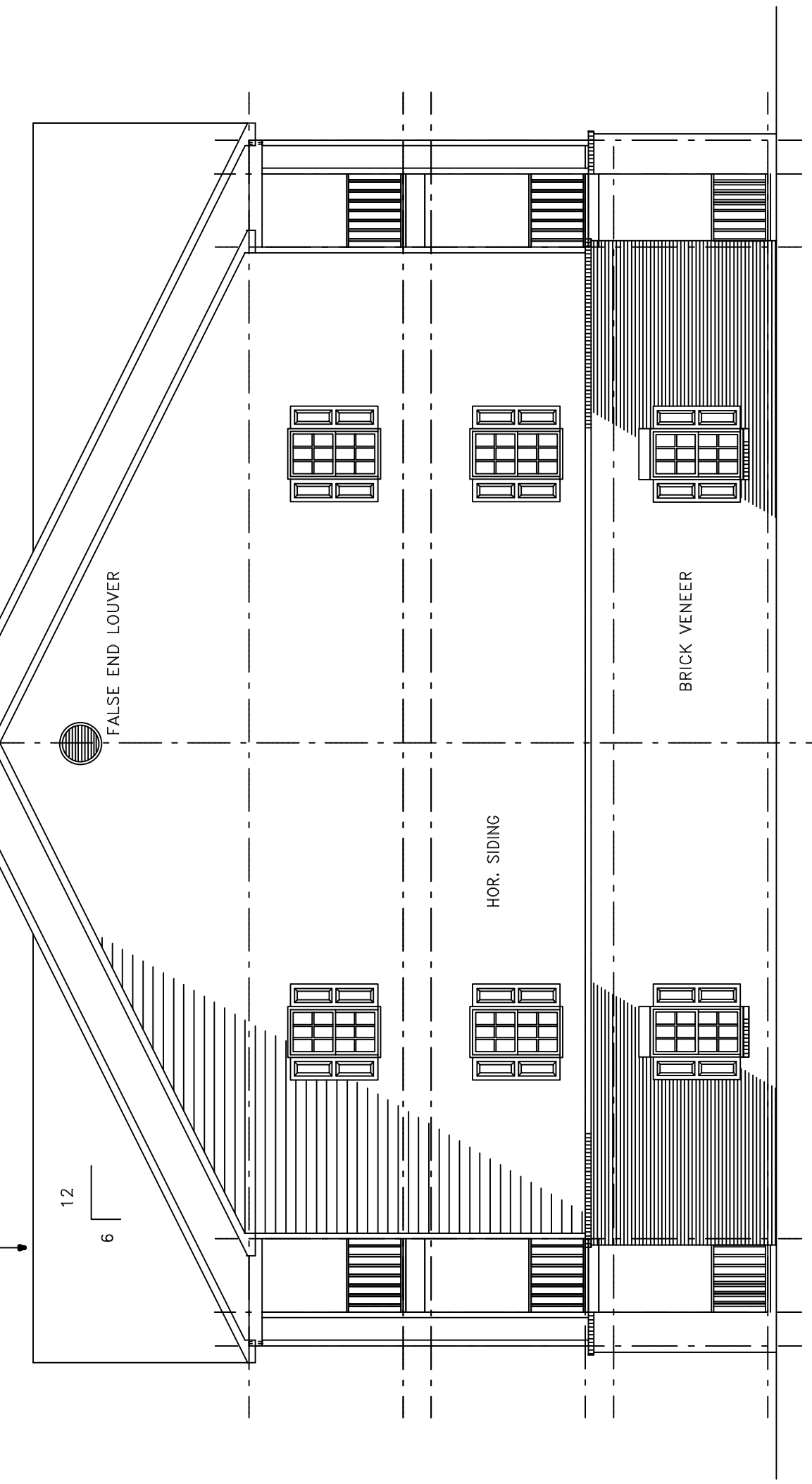
SCALE: 1/8" = 1'-0"

ALUMINUM GUTTES AND DOWNSPOUTS OVERSIZED TO BE PROVIDED SEE SPECIFICATIONS

PRE-ENGINEERED TRUSSES (GENERAL): Shall be shop fabricated by a manufacturer licensed by connector components manufacturer such as "Gang-Nail", "Sartford" or "Grip-Plate". All lumber shall be stress rated and grade marked in accordance with engineered design data. Connector plates shall be galvanized sheet steel, 20 ga. minimum, 30,000 psi minimum yield strength. Oversize plates 20% to allow for fabrication variances. (Erection). Trusses shall be handled to prevent stresses that would affect strength of trusses. Provide continuous 1x4 bracing in all directions and secure to walls. Furnish Architect with shop drawings for approval.

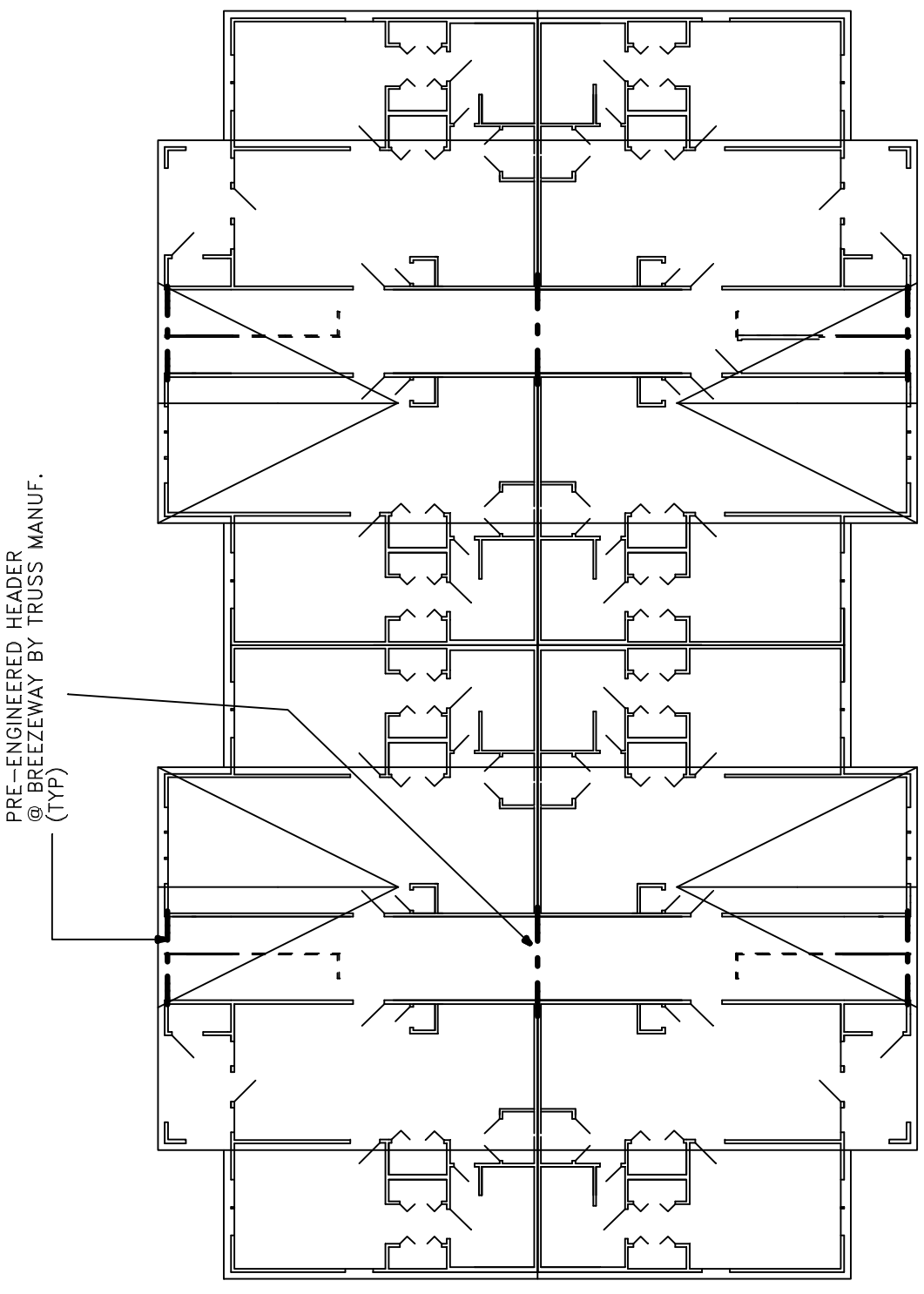
4" HIGH RAIL AT END A, TOP FLOOR LANDINGS / BREEZEWAY (TYP) MAX. 2" SPACE BETWEEN PORCH BECKING AND BOTTOM RAIL OF PORCH RAILING. PICKETS (GUSERS) MUST NOT ALLOW 4" SPHERE TO PASS BETWEEN

NOTE: VENT FUNCTIONAL FRONT, SIDE OF ATTIC SEPARATION ONLY. RIDGE VENT ALL GABLE RIDGES (TYP) PARTIALLY DRAFTSTOP SEE SECTION DETAILS



LEFT SIDE ELEVATION / RIGHT SIDE SIMILAR

SCALE: 1/8" = 1'-0"



SCHEMATIC ROOF PLAN